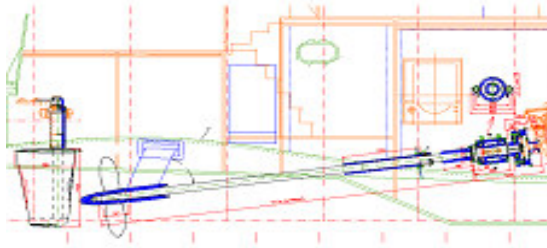




ORION DeLuxe Thrust Block

Low Noise, Highest Quality, Longest Lifespan



Poseidon

Propulsion Design - Helping to Make Boats Quieter

To minimize noise and vibration levels, engines are positioned on highly flexible mounts to isolate engine frequencies from the vessel's structure. Having the engine positioned on soft mounts thus requires exhaust, fuel supply and other connections – especially the connection between gearbox and driveline, to have minimum resistance to engine movement. Poseidon offers the optimum arrangement for these applications designed to meet each project's specific parameters. The CentOrionThrust Block – Highly Flexible Coupling arrangement allows maximum lifespan, minimum space requirements and the highest degree of Noise Reduction.

Design and Calculation Parameters: **Low Noise and Vibration!**

- Calculations made according to ISO.
- Absorption of thrust based on 12,5 Kg maximum per HP (17 Kg per KW)
- Full approval by any classification society per application
- Nominal life span of minimum 25,000 hours. Based on · 25 % full load, 50 % 3/4 load and 25 % half load
- The life span will become longer when less torque and thrust are loaded on the bearing.
- Equipped with semi-flexible mounts. Can be supplied without.

Noise and Vibration Reductions Gained at the Source Result in Savings of Weight and Material Cost Throughout Construction

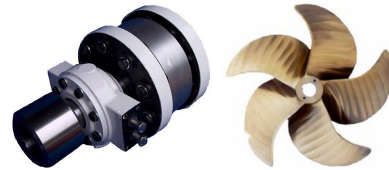
Designed and manufactured according to the rules of Lloyds Register of Shipping

Features of the Orion Thrust Block

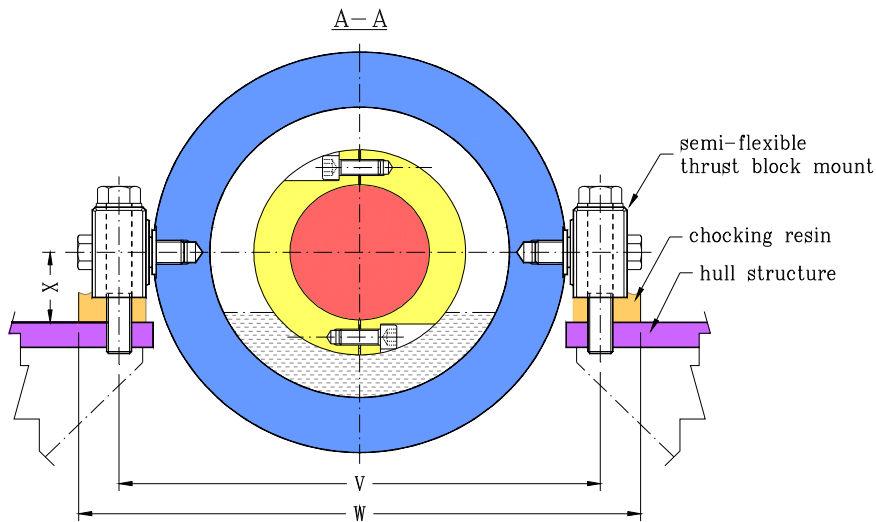
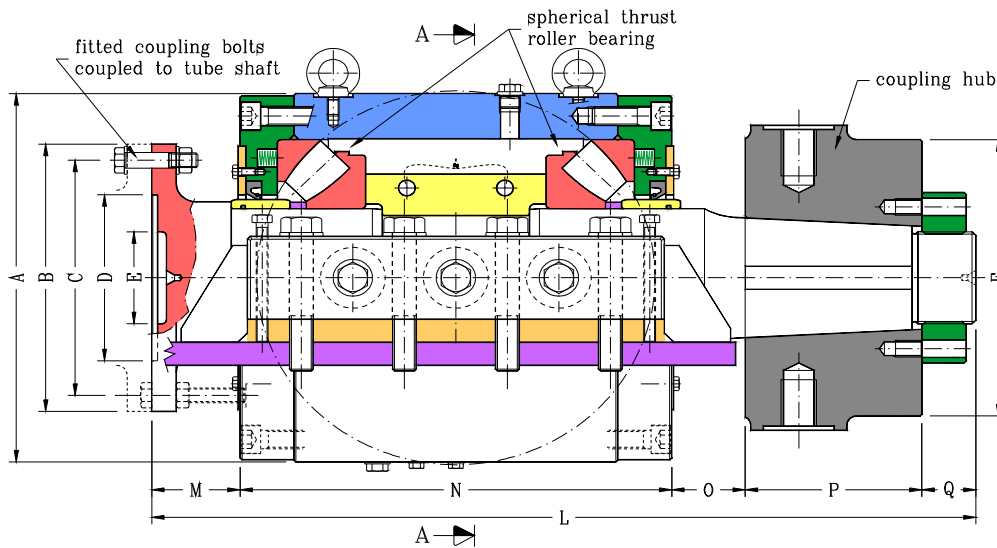
- Compact design, Limited space requirements Space saving internal taper coupling.
- Very Competitive Pricing
- 2 pieces highest quality NSK spherical thrust bearings that are allowing a miss alignment of 2°.
- Mild steel bearing housing
- Oil lubricated bearings. Dipstick standard. Optional low oil alarm. Optional oil cooler.
- Oil seals absorb max 2° misalignment

©2009 Donovan Marine, Inc. All Rights Reserved.

Product specifications and other information have either been provided by our Vendors or collected from publicly available sources. While Donovan Marine, Inc. makes every effort to ensure that the information contained in this document is accurate, we can make no representations or warranties as to the accuracy or reliability of any information provided. Donovan Marine, Inc. makes no warranties or representations whatsoever with regard to any product provided or offered by any Vendor, and you acknowledge that any reliance on representations and warranties provided by any Vendor shall be at your own risk.



DRIVELINE EQUIPMENT and PROPELLERS



size	A	B	C	D	E	F	L	M	N	O	P	Q	V	W	X
60	310	175	145	105	50	176	660	80	330	60	140	50	376	436	70
80	350	215	180	130	70	200	725	85	375	65	155	50	416	476	70
100	380	245	210	155	80	240	802	87	415	70	180	55	446	506	70
120	400	280	245	185	100	270	860	90	440	75	200	55	466	526	70
140	440	335	290	220	110	300	950	95	490	80	225	60	506	566	70
160	500	365	315	250	125	340	1060	100	570	80	250	60	566	626	70

All sizes in millimeters

©2009 Donovan Marine, Inc. All Rights Reserved.

Product specifications and other information have either been provided by our Vendors or collected from publicly available sources. While Donovan Marine, Inc. makes every effort to ensure that the information contained in this document is accurate, we can make no representations or warranties as to the accuracy or reliability of any information provided. Donovan Marine, Inc. makes no warranties or representations whatsoever with regard to any product provided or offered by any Vendor, and you acknowledge that any reliance on representations and warranties provided by any Vendor shall be at your own risk.