



Poseidon CentOrion – Thrust Block in Combination with a Highly Flexible Coupling

**Low Noise, High Quality and Long Life
Span**
all in a Compact Configuration.

To minimize noise and vibration levels, engines are positioned on highly flexible mounts to isolate engine frequencies from the vessel's structure. Having the engine positioned on soft mounts thus requires exhaust, fuel supply and other

connections – especially the connection between gearbox and driveline, to have minimum resistance to engine movement. Poseidon offers the optimum arrangement for these applications designed to meet each project's specific parameters. The **CentOrion Thrust Block – Highly Flexible Coupling** arrangement allows maximum lifespan, minimum space requirements and the highest degree of Noise Reduction.

Design and Calculation Parameters: **Low Noise and Vibration!**

- Calculations made according to ISO.
- Absorption of thrust based on 12,5 Kg maximum per HP (17 Kg per KW)
- Full approval by any classification society per application
- Nominal life span of minimum 25,000 hours. Based on · 25 % full load, 50 % 3/4 load and 25 % half load
- The life span will become longer when less torque and thrust are loaded on the bearing.
- Equipped with semi-flexible mounts. Can be supplied without.
 - Designed and manufactured according to the rules of Lloyds Register of Shipping -

**Noise and Vibration Reductions
Gained at the Source Result in
Savings of Weight and Material
Cost Throughout Construction**

Features of the Orion Thrust Block

- Compact design, Limited space requirements Space saving internal taper coupling.
- Very Competitive Pricing
- 2 pieces highest quality NSK spherical thrust bearings that are allowing a miss alignment of 2°.
- Mild steel bearing housing
- Oil lubricated bearings. Dipstick standard. Optional low oil alarm. Optional oil cooler.
- Oil seals absorb max 2° misalignment

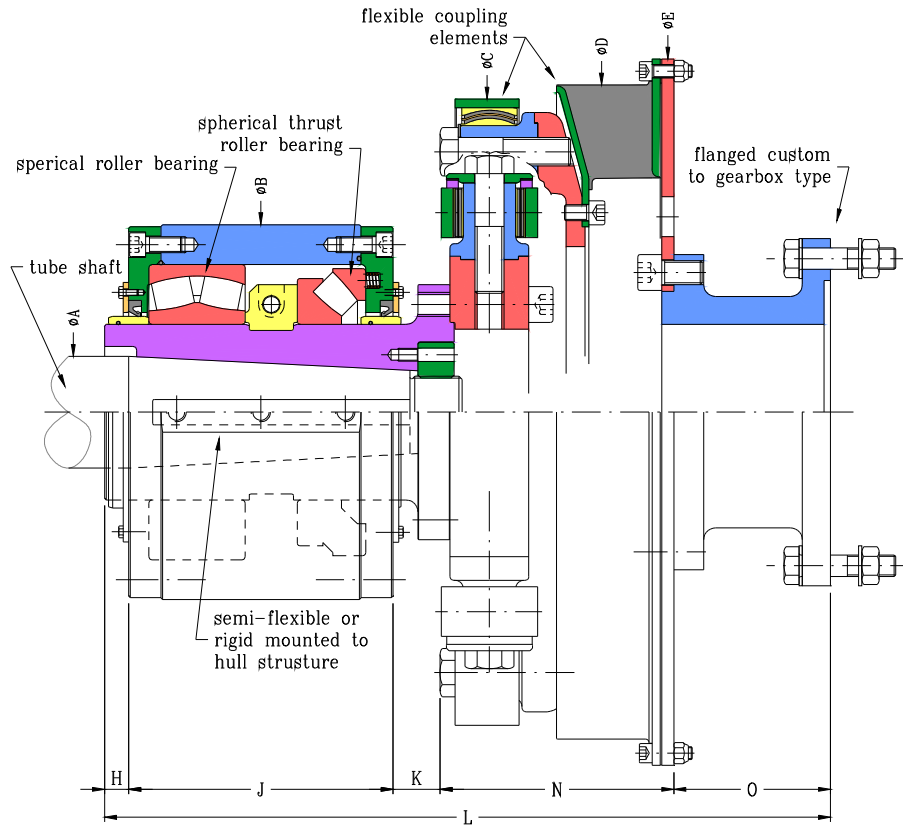


©2009 Donovan Marine, Inc. All Rights Reserved.

Product specifications and other information have either been provided by our Vendors or collected from publicly available sources. While Donovan Marine, Inc. makes every effort to ensure that the information contained in this document is accurate, we can make no representations or warranties as to the accuracy or reliability of any information provided. Donovan Marine, Inc. makes no warranties or representations whatsoever with regard to any product provided or offered by any Vendor, and you acknowledge that any reliance on representations and warranties provided by any Vendor shall be at your own risk.



CentOrion Thrust Block Coupling – Deluxe



<i>A</i>	<i>B</i>	<i>C</i>	<i>D</i>	<i>E</i>	<i>H</i>	<i>J</i>	<i>K</i>	<i>L</i>	<i>N</i>	<i>O</i>
60	290	404	418	466.7	25	212	55	603.5	174.0	137.5
80	320	441	477	518.0	25	239	55	635.0	163.5	152.5
100	370	595	598	673.1	25	267	55	738.5	214.5	177.0
120	400	608	650	733.4	30	289	60	800.5	225.5	196.0
140	470	740	730	800.0	30	330	60	917.0	281.0	216.0
160	550	787	820	885.0	30	375	60	1001.0	291.0	245.0

All sizes are in millimeters

©2009 Donovan Marine, Inc. All Rights Reserved.

Product specifications and other information have either been provided by our Vendors or collected from publicly available sources. While Donovan Marine, Inc. makes every effort to ensure that the information contained in this document is accurate, we can make no representations or warranties as to the accuracy or reliability of any information provided. Donovan Marine, Inc. makes no warranties or representations whatsoever with regard to any product provided or offered by any Vendor, and you acknowledge that any reliance on representations and warranties provided by any Vendor shall be at your own risk.