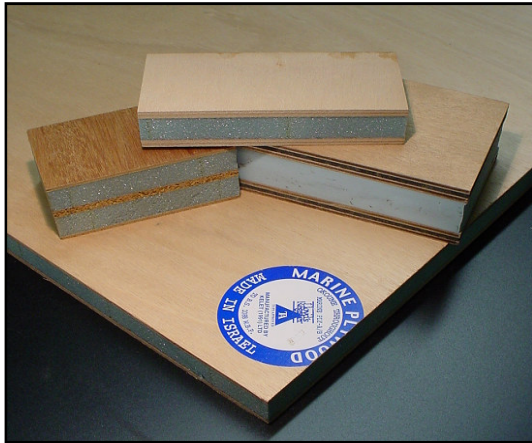
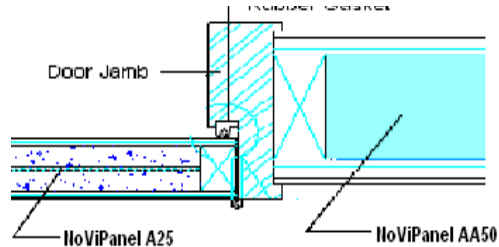


**THERMAL- ACOUSTIC CONTROL MATERIALS**



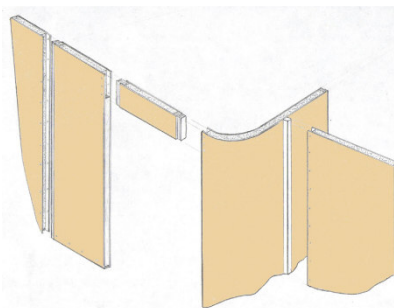
- NoViPanel- A (Standard)**
- NoViPanel- AA (High Transmission Loss)**
- NoViPanel- D (Foam Core only)**



**NoViPanel –A , AA & D** are ready-to-use laminated Bulkhead panels for interior partitioning, consisting of marine quality Water/Boil/Proof cover plates combined with foam and acoustic barrier cores. Several types are available and have superior transmission loss and dampening as compared to standard plywood. The barrier core sheet is a flexible sound-absorbing sheet. The open-cell core structure in combination with Urethane Type 1 resilient glue provides structural adhesive strength and sufficient flexibility to improve the acoustic properties. Panels can be veneered directly

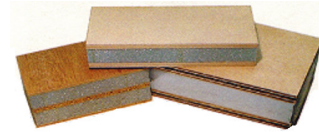
**NoViPanel Composite Bulkhead** panels are easy to saw with a circular or band saw and handling is quite similar to the handling of regular plywood. Edge joining is best accomplished by spline joining using solid timber. Wire and pipe chases can be either edge bored by hot rod or extended drill method or by surface routing and surface repair. Panels can be veneered using standard techniques. The acoustic core material is resistant to water, oil, fuel and diluted acids. Medium sensitivity to high humidity, do not expose to direct sunlight best storage temperature is 15 °C to 20 °C. Service temperatures from –20 °C up to 80 °C are recommended.

Sizes: 1200 x 2400 standard sheet size Curved sections can be delivered per custom order. Entire interior prefabricated bulkhead systems are also offered, delivered precut, wire runs in place, ready to assemble.



©2009 Donovan Marine, Inc. All Rights Reserved.

*Product specifications and other information have either been provided by our Vendors or collected from publicly available sources. While Donovan Marine, Inc. makes every effort to ensure that the information contained in this document is accurate, we can make no representations or warranties as to the accuracy or reliability of any information provided. Donovan Marine, Inc. makes no warranties or representations whatsoever with regard to any product provided or offered by any Vendor, and you acknowledge that any reliance on representations and warranties provided by any Vendor shall be at your own risk.*


**THERMAL- ACOUSTIC CONTROL MATERIALS**

Type	Configuration	Weight / sheet	
		lbs	kg
	Standard Transmission Loss H-45 PVC foam		
<b>NoViPanel – A25</b>	4mm WBP Plywood / 6 mm foam / 4mm IsoCor650 / 6 mm foam / 4mm WBP Plywood	49	22.3
<b>NoViPanel – A30</b>	4mm WBP Plywood / 10 mm foam / 4mm IsoCor650 / 10 mm foam / 4mm WBP Plywood	52	23.7
<b>NoViPanel – A35</b>	4mm WBP Plywood / 13 mm foam / 4mm IsoCor650 / 13 mm foam / 4mm WBP Plywood	54	24.6
<b>NoViPanel – A45</b>	4mm WBP Plywood / 16 mm foam / 4mm IsoCor650 / 16 mm foam / 4mm WBP Plywood	56	25.5
<b>NoViPanel – A50</b>	4mm WBP Plywood / 20 mm foam / 4mm IsoCor650 / 20 mm foam / 4mm WBP Plywood	59	26.8
<b>NoViPanel – A60</b>	4mm WBP Plywood / 25 mm foam / 4mm IsoCor650 / 25 mm foam / 4mm WBP Plywood	62	28.2
<b>NoViPanel – A75</b>	4mm WBP Plywood / 32 mm foam / 4mm IsoCor650 / 32 mm foam / 4mm WBP Plywood	67	30.5
	High Transmission Loss H-45 PVC foam		
<b>NoViPanel – AA20</b>	4mm WBP Plywood / 4mm IsoCor650 / 6 mm foam / 4 mm IsoCor250 /4mm WBP Plywood	65	29.6
<b>NoViPanel – AA25</b>	4mm WBP Plywood / 4mm IsoCor650 / 10mm foam / 4 mm IsoCor250 /4mm WBP Plywood	67	30.5
<b>NoViPanel – AA30</b>	4mm WBP Plywood / 4mm IsoCor650 / 16mm foam / 4 mm IsoCor250/4mm WBP Plywood	69	31.4
<b>NoViPanel – AA35</b>	4mm WBP Plywood / 4mm IsoCor650 / 20mm foam / 4 mm IsoCor250/4mm WBP Plywood	70	31.8
<b>NoViPanel – AA40</b>	4mm WBP Plywood / 4mm IsoCor650 / 25mm foam / 4 mm IsoCor250/4mm WBP Plywood	72	32.3
<b>NoViPanel – AA45</b>	4mm WBP Plywood / 4mm IsoCor650 / 32mm foam / 4 mm IsoCor250/4mm WBP Plywood	74	33.7
<b>NoViPanel – AA50</b>	4mm WBP Plywood / 4mm IsoCor650 / 38mm foam / 4 mm IsoCor250/4mm WBP Plywood	76	34.6
<b>NoViPanel – AA65</b>	4mm WBP Plywood / 4mm IsoCor650 / 51mm foam / 4 mm IsoCor250/4mm WBP Plywood	81	36.7
	Structural Foam Core Composite Panels H-45 PVC foam		
<b>NoViPanel – D9</b>	1.5mm WBP Plywood / 6 mm foam / 1.5 mm WBP Plywood	12	5.5
<b>NoViPanel – D13</b>	1.5mm WBP Plywood / 10 mm foam / 1.5 mm WBP Plywood	13	5.9
<b>NoViPanel – D15a</b>	1.5mm WBP Plywood / 12 mm foam / 1.5 mm WBP Plywood	14	6.4
<b>NoViPanel – D15b</b>	4 mm WBP Plywood / 6 mm foam / 4 mm WBP Plywood	28	12.7
<b>NoViPanel – D18</b>	4 mm WBP Plywood / 10 mm foam / 4 mm WBP Plywood	30	13.6
<b>NoViPanel – D20</b>	4 mm WBP Plywood / 12 mm foam / 4 mm WBP Plywood	31	14.1
<b>NoViPanel – D28</b>	4 mm WBP Plywood / 20 mm foam / 4 mm WBP Plywood	33	15.0

- Panels are glue laminated on flat press using flexible waterproof urethane glues
- Curved radius panels available R-75mm and larger. Prices are apx net+20% per sheet
- HPL faced panels also available
- PVC Foam, Balsa Core and B-rated fire rated core also available.

- Lead times vary from in-stock to 6-8 weeks based on quantity and configuration. Full ship set orders, cut and configured per interior drawings are encouraged. Electric and pipe runs can be accommodated on approved plans.

©2009 Donovan Marine, Inc. All Rights Reserved.

*Product specifications and other information have either been provided by our Vendors or collected from publicly available sources. While Donovan Marine, Inc. makes every effort to ensure that the information contained in this document is accurate, we can make no representations or warranties as to the accuracy or reliability of any information provided. Donovan Marine, Inc. makes no warranties or representations whatsoever with regard to any product provided or offered by any Vendor, and you acknowledge that any reliance on representations and warranties provided by any Vendor shall be at your own risk.*