

**THERMAL- ACOUSTIC CONTROL MATERIALS**



**NoViFloor -250** 250 kg/m<sup>3</sup> core

**NoViFloor- 650** 650 kg/m<sup>3</sup> core

**NoViFloor- 920** 920 kg/m<sup>3</sup> core

**NoViFloor - X** 1800 kg/m<sup>3</sup> core

**NoViFloor Acoustic Plywood** are ready-to-use laminated panels constructed of marine quality Water/Boil/Proof cover plates and cork/elastomer composite or mineral loaded vinyl core materials ( IsoCor 15,17,29 and NoViBar X2R). Several configurations are available and have superior (relative to mass and frequency) air and structure-borne noise transmission loss as compared to standard plywood. The flexible sound-absorption/barrier core material's open-cell structure in combination with Type 1 resilient glue provides a structural adhesive strength and sufficient flexibility to improve the acoustic properties.

**NoViFloor Acoustic Plywood** is widely used as floating sole and compartment joinery construction on board yachts. Other applications are as basic sheathing for sound enclosures and decking in motor coach and rail transport.

Color (core): Lt. Brown (29), Dk. Brown (15, 17), dark gray (X2R) Odor (core): slight rubber odor  
Specific weight:

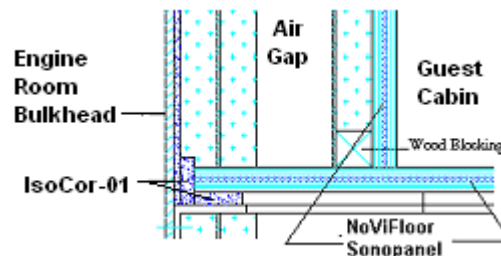
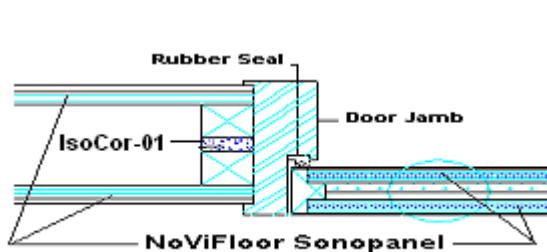
<b>NoViFloor 250</b>	4/4/4 (12mm) - 5.3 kg/m <sup>2</sup>	6/4/6 (16mm) - 7.6 kg/m <sup>2</sup>	9/4/9 (22mm) - 11.0 kg/m <sup>2</sup>
<b>NoViFloor 650</b>	4/4/4 (12mm) - 6.9 kg/m <sup>2</sup>	6/4/6 (16mm) - 9.2 kg/m <sup>2</sup>	9/4/9 (22mm)- 12.6 kg/m <sup>2</sup>
<b>NoViFloor 920</b>	4/4/4 (12mm) - 7.9 kg/m <sup>2</sup>	6/4/6 (16mm) - 10.2 kg/m <sup>2</sup>	9/4/9 (22mm)- 13.6 kg/m <sup>2</sup>
<b>NoViFloor X</b>	4/4/4 (12mm) - 11.5 kg/m <sup>2</sup>	6/4/6 (16mm) - 13.8 kg/m <sup>2</sup>	9/4/9 (22mm)- 17.2 kg/m <sup>2</sup>

Packaging: available in sheet sizes of 1200 x 2400 mm

Physical and chemical properties: clean, dry sheets non-toxic, non-irritant

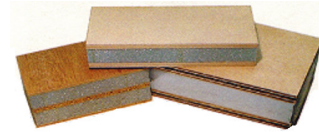
Fire hazards (core): sustained ignition, material will burn to produce dense smoke.

**NoViFloor Acoustic Plywood** is easy to saw with a circular or band saw and handling is quite similar to the handling of regular plywood. Service temperatures from -20 °C up to 80 °C are recommended. The crumbed rubber core material is resistant to water, oil, fuel and diluted acids.

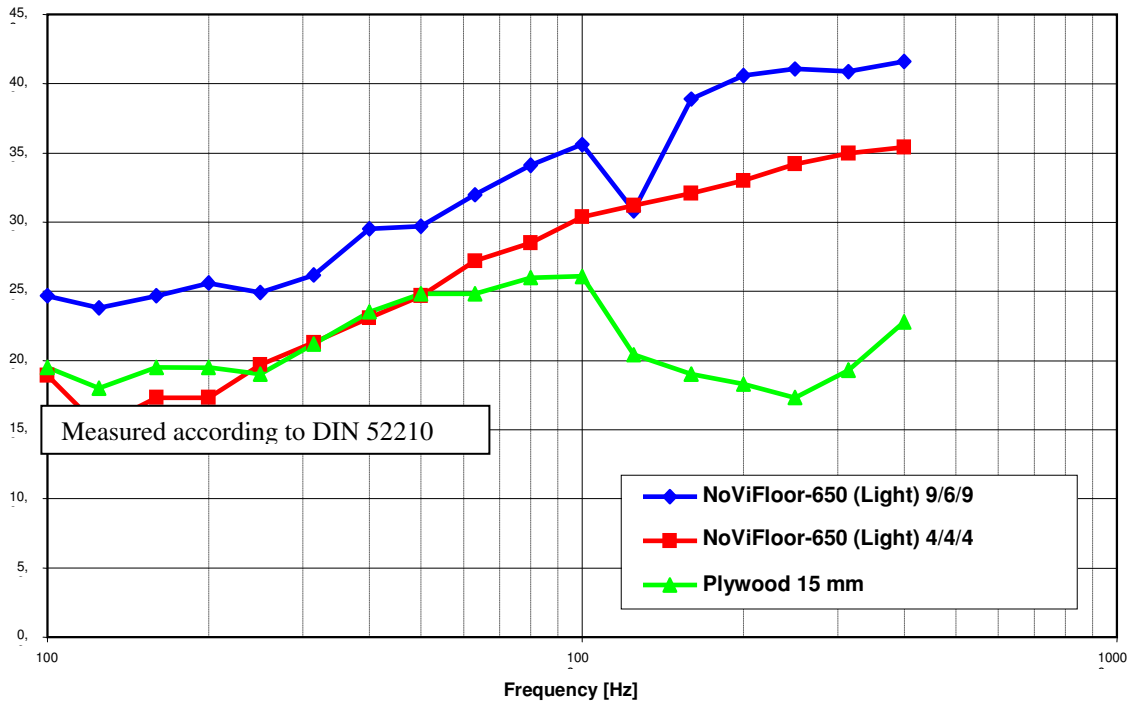


©2009 Donovan Marine, Inc. All Rights Reserved.

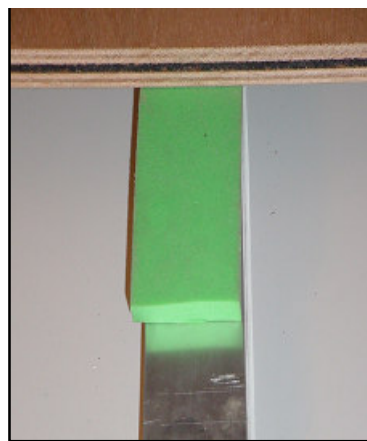
*Product specifications and other information have either been provided by our Vendors or collected from publicly available sources. While Donovan Marine, Inc. makes every effort to ensure that the information contained in this document is accurate, we can make no representations or warranties as to the accuracy or reliability of any information provided. Donovan Marine, Inc. makes no warranties or representations whatsoever with regard to any product provided or offered by any Vendor, and you acknowledge that any reliance on representations and warranties provided by any Vendor shall be at your own risk.*



**Transmission Loss - NoViFloor vs. Plywood**



Floating Interior Lining



Floating Floors



Bulkhead and Cabin Soles

©2009 Donovan Marine, Inc. All Rights Reserved.

Product specifications and other information have either been provided by our Vendors or collected from publicly available sources. While Donovan Marine, Inc. makes every effort to ensure that the information contained in this document is accurate, we can make no representations or warranties as to the accuracy or reliability of any information provided. Donovan Marine, Inc. makes no warranties or representations whatsoever with regard to any product provided or offered by any Vendor, and you acknowledge that any reliance on representations and warranties provided by any Vendor shall be at your own risk.